

# LEO2

Efficiency at your fingertips



FLOWER SHOP

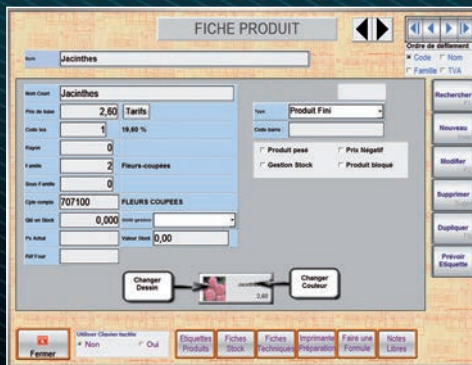


# LEO2

Efficiency at your fingertips

## 👤 CHECK OUT IN A FLASH

To make your life easier, Leo 2 registers include *Coin* and *Note* buttons in €. A customer hands you €20 to pay for his bouquet: select the bouquet then click on €20. The change due is displayed. Operation complete!



## 👤 COMPUTER WHIZ NOT REQUIRED

Need to change a price? Add a new product? Our interface guides you through the steps to make your daily operations quick and easy.

## 👤 SPECIAL ORDERS: HANDLE WITH CARE

Press *Customer order*. Delivery time, message to include, customer deposit, create a reminder Everything you need is at your fingertips.

## 👤 REWARD CUSTOMER LOYALTY

With Leo 2, create your own customer loyalty program. Collect points? Reward repeat visits? Offer a discount? You decide what will make your customers happy.



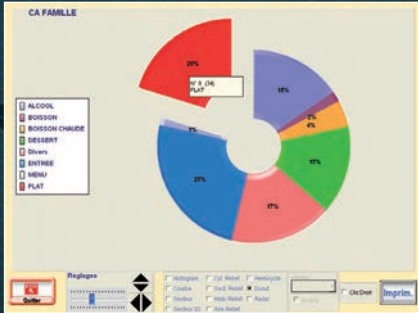
## 👤 NEVER LOSE A SALE

Three customers want red roses, but you've run out. The *Lost sales* feature calculates the products you could have sold. A smart tool to help you manage and plan your orders to stay in sync with customer demand.



## CHECK YOUR DAILY MARGINS

Once your product has been input into the system, you can display your daily margins in real time. Clear and easy tracking of your business, minute by minute. A great motivational tool !



## LIVE INVENTORY MONITORING

Display your inventory all of your POS system's buttons. Select a flower or plant, and the information on your buttons is updated automatically. Perfect, seamless management !



## A TEAM BY YOUR SIDE

Your reseller has the full support of the Atoo team that designed the Leo 2 software. Atoo staff are renowned for their availability and dedication to keeping customers happy. Got a question? We're listening.



# FEATURES

---

## POS & REGISTER

- Manage sales staff, edit pricing
- Access products from the touch screen and multiple bar codes
- Single, repeat or partial billing or transfer to customer account
- Credit on bills
- Manage and calculate the cost of freebies (greenery, etc.), losses and lost sales
- End of service and register closing
- Promotional slide show with display for customers
- Connection to automatic change machine
- Production and price sticker print out
- Configurable keypad

---

## PRODUCTS

- Product listings
- Manage products by group and category
- Stock management
- Product fact sheets
- Multi-price management

---

## SALES STAFF

- Sales performance by staff member
- Track and manage staff schedules
- Payroll calculator
- Manage passwords, magnetic keys and badges

---

## CUSTOMER ACCOUNTS

- Customer loyalty module management
- Direct order input at the register
- Account history, bills, account status, special rates
- Badge, mailing list management

## MANAGEMENT

- Staff management, register management, shop management (with Leo 2 Management)
- Export and print accounts
- Print deposit slips and voucher slips (with GTO software)
- Performance and statistical reports (sales by day, by staff member, by product, lost sales, etc.) and graphs (e.g. traffic)
- Send data by fax, e-mail or PDF

---

## COMPLETE INTERCONNECTION

- Change machines, customer files, invoice and ticket printer, handheld devices (PDAs, Oderman), CCTV surveillance, accounts exports (Ebp, Ciel, Sage, Cegid, Quadra...), Leo 2 management software (transfers, stock, billing), credit card processing, fax, email, PDF, Word, Excel, OpenOffice compatible

---

## SECURITY

- Detailed log of register activity combined with CCTV surveillance of establishments
- Register discrepancies log
- Monitor cash drawer access

---

## BACK-UP AND NETWORKING

- Real-time back-ups
- Multi-site links via Internet
- Streamlined networking or Windows XP or higher client-server network

---

## ADD-ONS

- Oderman handheld devices and PDAs
- Leo 2 Management software (purchasing, centralized billing, centralized stock keeping, production, remote site management...)



[www.leo2.uk](http://www.leo2.uk)

*(Available features may vary depending on the version of Leo 2 software)*